

Packaged Refrigeration Unit

Ceiling-Mounted Compact Series



Expansion system

Equipped Danfoss electric expansion valve, fully balanced, precise liquid injection in evaporators for safe and reliable operation.



Defrost

Defrosting by hot gas, equipped Sanhua solenoid valve for liquid line shut-off, reducing defrosting time and power consumption.



Compressor

Equipped HIGHLY rotary compressor for high energy efficiency and reliability with a light weight structure.

* Embraco, Danfoss compressor are available by demand.



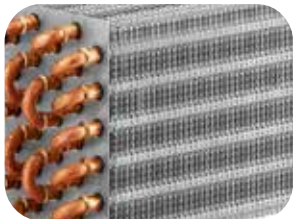
Fan motor

Axial fan motors for condenser and evaporator, optimizing energy consumption and noise performance.



Condenser

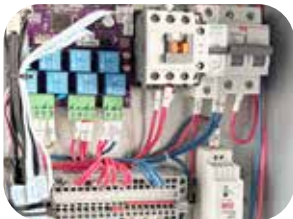
Micro-channel condenser is energy efficient and reduction of the refrigerant charge. Its lightweight but also galvanic anti-corrosion.



Evaporator

Copper tube, aluminum fin coils offer superior heat transfer and corrosion resistance.

Proper fin spacing to manage condensation and prevent airflow blocking

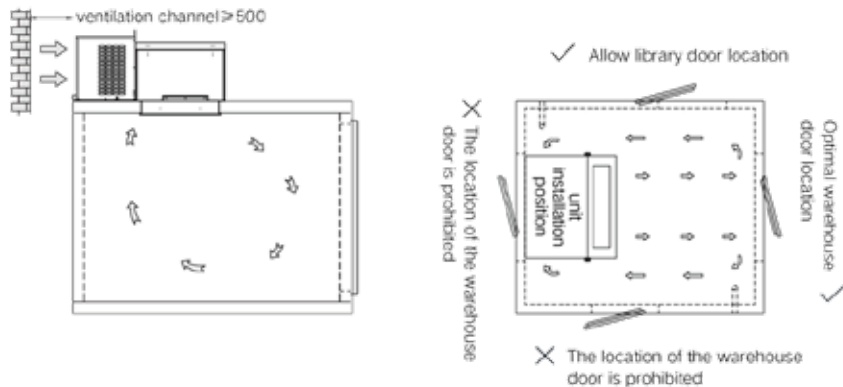


Electrical panel

Integrated digital display and all the protection and electronic control elements.

Terminal block for connecting the elements. All electrical elements use connectors for easy replacement.

Installation Scheme



Packaged Refrigeration Unit

Ceiling-Mounted Compact Series

Constant temperature series | Application -5°C / +5°C | Ambient +35°C | Cold room panel 100mm

Model ⁽¹⁾	Power supply	Nominal cooling capacity, W	Rated power kW	Rated current A	Recommend cold room volume m ³	Defrost	Compressor	Refrigerant	Unit series	Net weight kg
MONO-HA00832	220/1/50	1180	0.6	3.5	6 – 9	Hot gas	HIGHLY - rotary ⁽²⁾	R404A	Series1	98
MONO-HA01032		1550	0.9	4.6	8 – 14				Series1	98
MONO-HA01532		2160	1.1	6.0	13 – 26				Series2	119
MONO-HA02032		2740	1.5	8.0	23 – 31				Series2	119
MONO-HA02532		3920	2.1	10.9	28 – 52				Series3	119
MONO-HA03032		4785	2.4	13.9	30 – 60				Series3	126
MONO-HA03532	380/3/50	5560	3.0	15.4	52 – 87				Series4	127
MONO-HA03552		5360	2.7	5.6	52 – 87				Series4	127
MONO-HA04052		6135	3.2	7.5	65 – 120				Series4	130

(1) Water cooling models are available by demand.
(2) Embraco, Danfoss compressor are available by demand.

Constant temperature series | Application -20°C / -10°C | Ambient +35°C | Cold room panel 100mm

Model ⁽¹⁾	Power supply	Nominal cooling capacity, W	Rated power kW	Rated current A	Recommend cold room volume m ³	Defrost	Compressor	Refrigerant	Unit series	Net weight kg
MONO-MA01032	220/1/50	1240	0.8	6.0	4 – 9	Hot gas	HIGHLY – rotary ⁽²⁾	R404A	Series2	98
MONO-MA01232		1421	0.9	6.7	4 – 9				Series2	98
MONO-MA01532		1600	1.4	7.4	6 – 12				Series3	119
MONO-MA02032		2240	1.9	10.2	7 – 14				Series3	119
MONO-MA02532		2785	2.1	11.8	11 – 23				Series3	126
MONO-MA03032		3305	2.5	13.6	16 – 30				Series3	127
MONO-MA03052	380/3/50	3050	2.4	6.2	15 – 29				Series3	127
MONO-MA04052		3680	2.7	8.1	20 – 48				Series4	130
MONO-MA05052		6250	4.3	8.7	52 – 95				Series4	139

(1) Water cooling models are available by demand.
(2) Embraco, Danfoss compressor are available by demand.

Variable temperature series | Application -25°C / +5°C | Ambient +35°C | Cold room panel 100mm

Model ⁽¹⁾	Power supply	Nominal cooling capacity, W	Rated power kW	Rated current A	Recommend cold room volume m ³	Defrost	Compressor	Refrigerant	Unit series	Net weight kg
MONO-BA01532	220/1/50	1600 – 2740	1.8	9.9	7 – 30	Hot gas	HIGHLY – rotary	R404A	Series2	119
MONO-BA02032		2300 – 3920	2.4	8.8	11 – 52				Series3	119
MONO-BA03032		2785 – 4785	2.9	12	16 – 87				Series4	127
MONO-BA03032	380/3/50	3305 – 5560	3.4	6.5	17 – 87				Series4	127
MONO-BA04052		3680 – 6135	3.6	9.6	20 – 120				Series4	130

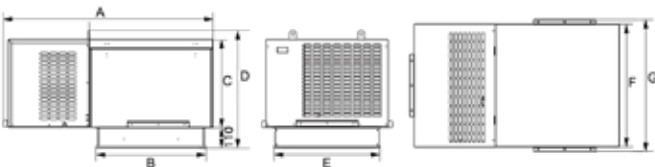
(1) Water cooling models are available by demand.

DC Inverter Variable temperature series | Application -25°C / +5°C | Ambient +35°C | Cold room panel 100mm

Model ⁽¹⁾	Rotational speed rpm	Nominal cooling capacity, W	Rated power kW	Rated current A	Recommend cold room volume m ³	Defrost	Compressor	Refrigerant	Unit series	Net weight kg
MONO-VA01081	1000 – 7200	1600 – 2740	-	8.0	-	Hot gas	DC inverter HIGHLY – rotary	R404A	Series2	119
MONO-VA01582	900 – 7200	2230 – 3970	-	10.9	-				Series2	119
MONO-VA02082	900 – 7200	3305 – 5560	-	15.4	-				Series3	127
MONO-VA03082	900 – 6600	3215 – 5360	-	6.2	-				Series3	127

(1) Water cooling models are available by demand.

Dimensions



Dimensions mm	A	B	C	D	E	F	G
Series1	1151	604	432	630	584	670	720
Series2	1151	604	482	641	584	670	720
Series3	1351	654	500	697	695	790	840
Series4	1351	654	550	709	695	790	840